

EEF GUIDE TO SUPPORTING SCHOOL PLANNING (2020-21) – TIERED MODEL

Ireby Church of England School

As a school we have received £80 per pupil from Reception to Year 6 (£2400) for year 2020-21

Below is a summary of how we have used this money to support our pupils

1 Teaching

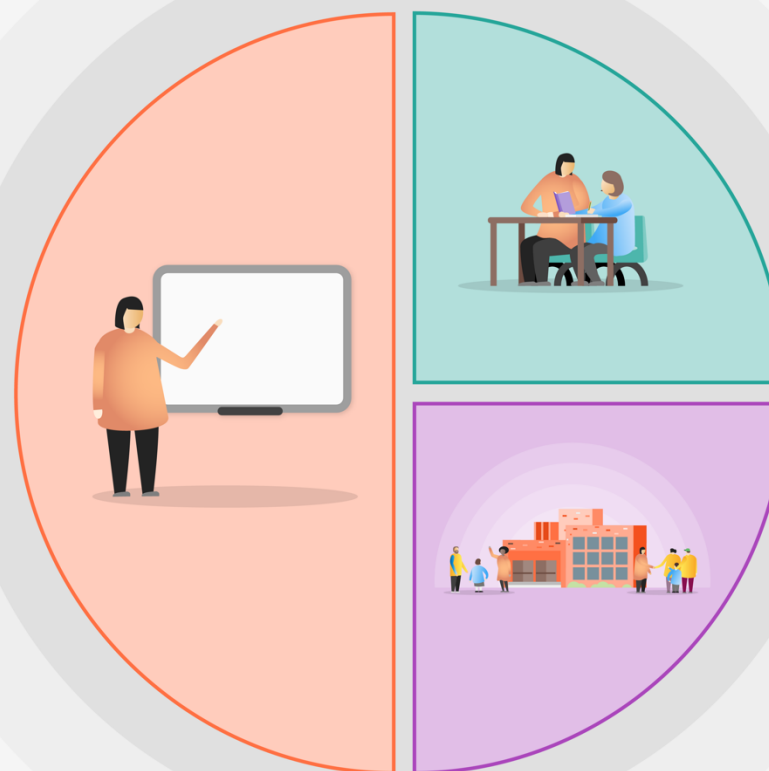
Increase the hours of KS 2 teacher by 6 hours per week allowing pupils access to quality first teaching
Cost £2600 for two terms allowing us to achieve the following:

Ensure maths are taught in upper and lower KS 2 throughout the week

Focus on strategies of feedback and mastery (+8 and +5 EEF)

Improve the quality of writing, grammar, spelling and punctuation

All strategies implemented from evidence based EEF Teaching and Learning Toolkit with known impact on learning



2 Targeted academic support

Extend small group tuition with class teachers (+4 months EEF) for writing and mathematics for all pupils

3 Wider strategies

Continue to develop outdoor adventure learning across the school. (+4)

Improve the use of digital technology to support learning (+4)